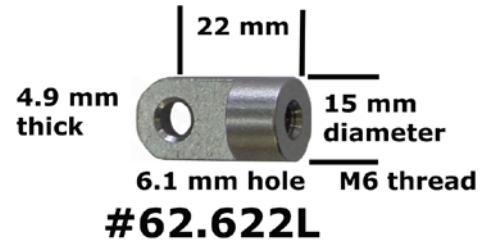


**Stainless Steel Eyes M5 x 08**



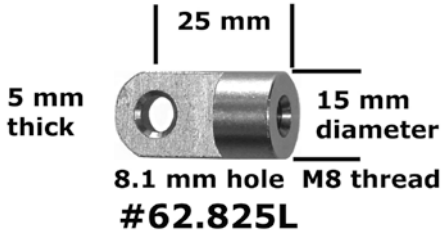
**Stainless Steel Eyes M6 x 1**



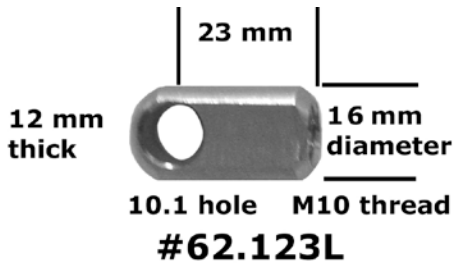
**Stainless Steel Eyes M8 x 1.25**



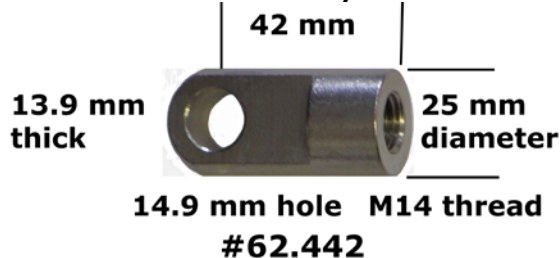
**Stainless Steel Eyes M8 x 1.25**



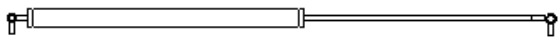
**Stainless Steel Eyes M10 x 1.5**



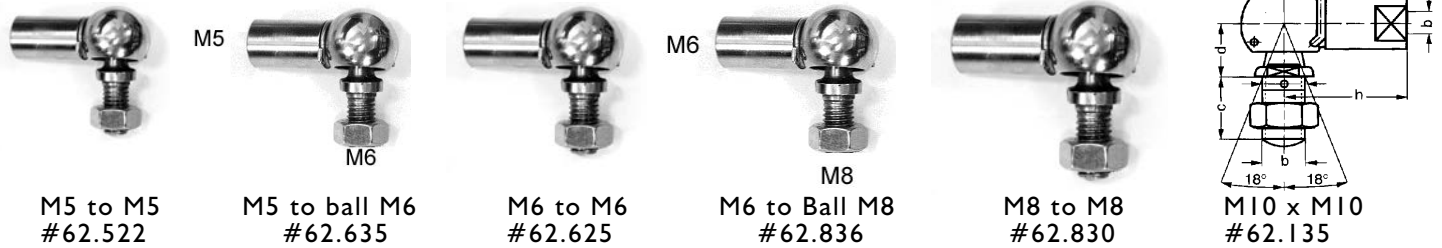
**Stainless Steel Eyes M14 x 1.5**



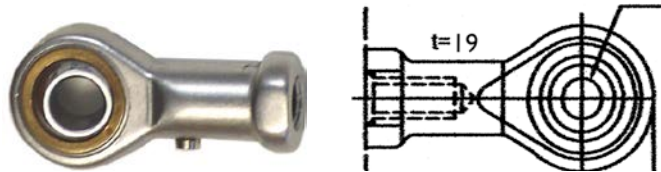
**Note: All Eye End Fittings are supplied in standard mill finish.  
Eye end fittings with part numbers ending with "L" are made of 316 stainless steel.  
Otherwise they are made of 304 stainless steel.**



**Stainless Steel Ball joints, swivel 18 degrees; ball can be separated from cup after removing circlip**

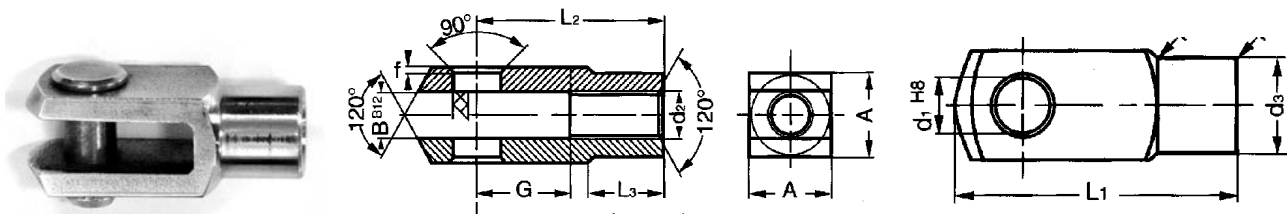


Ball joints Order numbers	OD diameter	For size hole	Overall length	Thread (b)	Distance To ball (h)	size ball	For gas spring series
<b>62.522</b>	10 mm	5.1 mm	<b>28 mm</b>	M5 x 0.8	22 mm	8 mm	<b>6-15</b>
<b>62.635</b>	10 mm	6.1 mm	<b>28 mm</b>	M5 x 0.8 M6 x 1	22 mm	8 mm	<b>6-15</b>
<b>62.625</b>	10 mm	5.1 mm	<b>32 mm</b>	M6 x 1	25 mm	10 mm	Not applicable
<b>62.836</b>	14 mm	8.1 mm	<b>39 mm</b>	M6 x 1 M8 x 1.25	30 mm	13 mm	Not applicable
<b>62.830</b>	14 mm	8.1 mm	<b>39 mm</b>	M8 x 1.25	30 mm	13 mm	<b>8-19 and 10-23</b>
<b>62.135</b>	18 mm	10.1 mm	<b>47 mm</b>	M10 x 1.5	35 mm	16 mm	<b>14-28</b>



Stainless Steel Swivel Ball Ends. Swivels 12 degrees to either side

Swivel Ends Order numbers	OD diameter	size hole Ø	Overall length	Thread	Distance	For gas spring series
<b>62.527</b>	9 / 11 mm	5.1 mm	36 mm	M5 x 0.80	27 mm	<b>6-15</b>
<b>62.536</b>	12.5 / 16 mm	8.1 mm	48 mm	M8 x 1.25	36 mm	<b>8-19 and 10-23</b>
<b>62.443</b>	15 / 19 mm	10.1 mm	58 mm	M10x 1.5	43 mm	<b>14-28</b>
<b>62.457</b>	20 / 25 mm	14.1 mm	76 mm	M14 x 15	57 mm	<b>22-38</b>

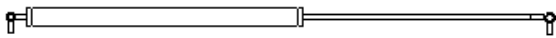


Stainless Steel Fork with Pin. Pin can be removed from fork after removing circlip

Forks with Pin Order number	D3 diameter	pin diameter	L1 Overall length	L2 Length to pin	A= square dimension	Circlip size	For gas spring series
<b>62.520</b>	9 mm	5 mm	26 mm	20 mm	10x10 mm	5	<b>6-15</b>
<b>62.833</b>	14 mm	8 mm	42 mm	33 mm	16x16 mm	8	<b>8-19 and 10-23</b>
<b>62.140</b>	18 mm	10 mm	52 mm	40 mm	20x20 mm	10	<b>14-28</b>
<b>62.456</b>	24 mm	14 mm	72 mm	56 mm	27x27 mm	14	<b>22-38</b>

**Note: All parts listed above are available from stock.**

**Please see for other eye-endfittings page 6-11-A**



Izerwaren  
order  
numbers

- 64.088 Hatch mounting bracket for ball joints M8
- 64.089 Hatch mounting bracket for ball joints M10  
Cast stainless steel  
1 1/2" x 2 3/8" footprint; 3/4" stand off



#64.088 Hatch mounting bracket: 1 1/2" x 2 3/8" footprint 3/4" stand off  
Showing M8 ball joint #62.830 to be ordered separately #64.098 for M10

- 64.205 Hatch mounting bracket for Eyes M8  
1 1/4" stand off
- 64.206 Hatch mounting bracket for Eyes M10  
1 1/4" stand off



#64.205 Bracket for eyes  
using M8 or M10 eyes

When using M10 ball joints order: #64.206

ball joints and eyes sold separately

- 64.255 Bulkhead mounting bracket  
for ball joints M8
  - 64.256 Bulkhead mounting bracket for  
ball joints M10
  - 64.257 Bulkhead mounting bracket  
for eyes M8
  - 64.258 Bulkhead mounting bracket  
for eyes M10
- Cast stainless steel  
1 7/8" x 2 7/8" footprint; 3/4" stand off



#64.255 Bulkhead mounting bracket  
using M8 ball joints

#64.257 Bulkhead mounting bracket  
using M8 eye

Cast stainless steel 1 7/8" x 2 7/8" footprint; 3/4" stand off  
ball joints and eyes sold separately

- 64.250 Bulkhead mounting bracket  
for ball joints M5  
Cast stainless steel, polished  
2" x 7/8" footprint  
3/4" stand off

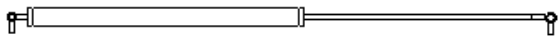


#64.250

Bulkhead mounting bracket  
2" x 7/8" footprint 3/4" stand off

#64.200

Hatch mounting bracket M5 eye  
2 3/8" x 3/4" footprint 1 1/4" stand off  
ball joints and eyes sold separately



**MEDIUM DUTY GAS SPRING BRACKETS 5/32" ~ 2.5 mm thick**



#64.582H5  
with hole M5



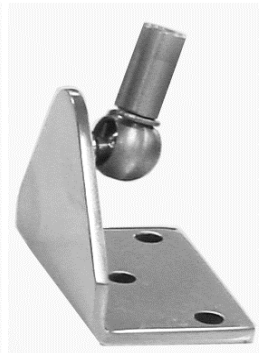
#64.582H8  
with hole M8



#64.8825  
Ball joint M8 outside



#64.5825B  
Ball joint M5 outside



#64.5825A  
Ball joint M5 inside

**ANGLE BRACKET** 90 degree H: 1 3/16". L x W: 2"x 1 1/2"  
5/32" thick. 316 stainless steel.



#64.584H5  
with hole M5



#64.584H8  
with hole M8



#64.8845  
with ball joint M8



#64.5845  
with ball joint M5

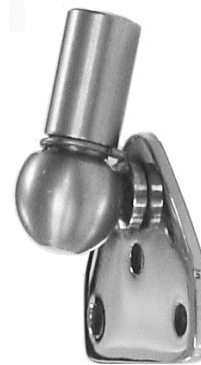
**OFFSET BRACKET** W: 2" x H: 1 3/4". 3/16" offset  
2.5 mm thick or 5/32" thick. 316 stainless steel.



#64.583H5  
with hole M5



#64.5835  
with hole M8



#64.583H8  
with ball joint M8

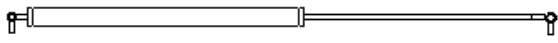


#64.5835  
with ball joint M5

**FLUSH BRACKET**  
2" wide x 1 11/16" high. 5/32" thick. 316 stainless steel

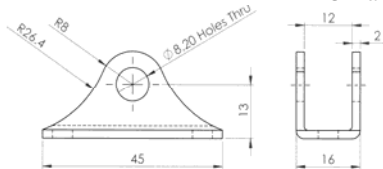
More gas spring brackets on page 6-14 and page 6-15-1 and page 6-15-2.





Part #

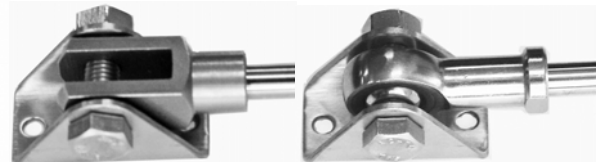
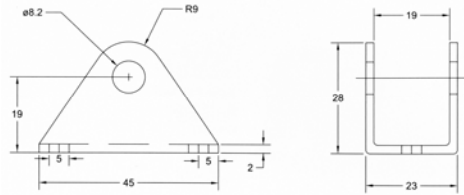
**MEDIUM DUTY GAS SPRING BRACKETS for Eyes M8  
Small Footprint**



#64.306; U shaped 316 stainless steel bracket with pin for M8 eye end fittings. Shown with eye end fitting #62.819  
Bracket size: 45 x 16 mm; mounting: 13 mm high. 1 3/4" x 5/8"; mounting: 1/2" high.

**MEDIUM DUTY GAS SPRING BRACKETS for Forks M8  
Small Footprint**

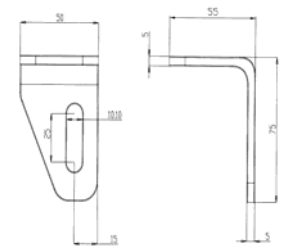
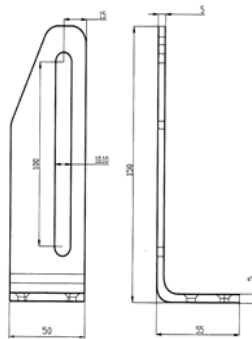
64.306



#64.303; U shaped 316 stainless steel bracket with bolt. Shown with M8 forks #62.833 and M8 swivel-end #62.538  
Bracket size: 45 x 23 mm; mounting: 19 mm high. 1 3/4" x 15/16"; mounting: 3/4" high

**HEAVY DUTY BRACKETS f**

64.303



64.CLG #64.CLG; 150 x 50 mm; 55 mm high; 5 7/8" x 2"; 2 3/16" high.  
64.CSM **Heavy duty brackets. Can also be used for Door Closer Gas Springs for Weather Doors.**

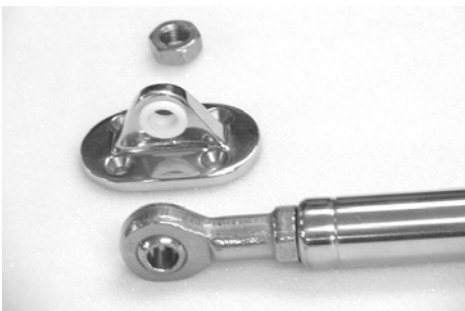
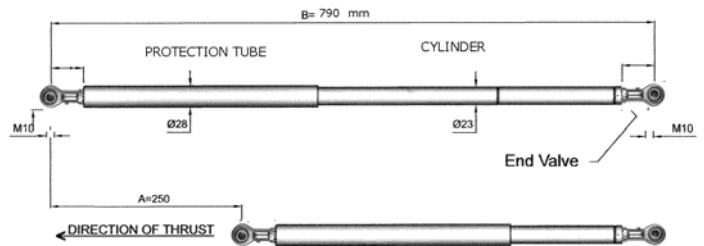
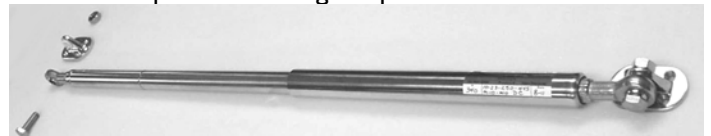
#64.CSM 75 x 50 mm; 55 mm high. 3"x2"; 2 3/16" high.

65.D125

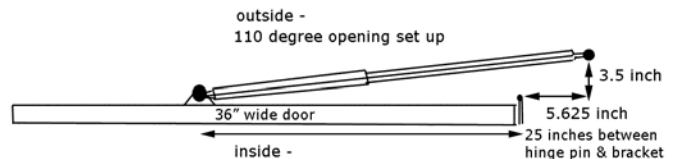
**#65.D125 DOOR CLOSER GAS SPRING. HEAVY DUTY**

For use on weather doors on yachts and ships with a weight up to 300 lbs.

- \* Stainless steel Door closer gas spring #10-23-250-790
- \* with stainless steel swivel eyes M 10
- \* Stroke: 250 mm overall.
- \* Length not counting threads, without end fittings: 700 mm
- \* Center to Center distance end fitting: 790 mm
- \* Please note stainless steel protection tube over rod.
- \* This door closer has a controlled extension speed
- \* Recommended Force setting: 500N
- \* Force range: 150 to 500 Newton



Set up with swivel ends #62.443 and #64.088 brackets



Possible set up of the 65.D125 door closer gas spring, using one bracket #62.443 and one bracket #64.CLG